



**BUREAU
VERITAS**

CONSUMER PRODUCTS SERVICES DIVISION



MAGMATIC LIMITED

Technical Report: (8514)098-0724

April 14, 2014

Date Received: April 08, 2014

Page 1 of 21

MAGMATIC LIMITED
THE MOTHERSHIP SHAFTSBURY CHAPEL UNION ROAD
BRISTOL, BS2 0LP

Sample Description:	BOOSTAPAK GREEN	Sample Size:	5
Vendor:	HACHI	Style No(s):	N/A
Manufacturer:	EASY PROFIT	SKN/SKU No.:	N/A
Buyer:	MAGMATIC	PO No.:	N/A
Import:	MAGMATIC	Ref #:	N/A
Labeled Age Grade:	NOT PRESENT	Country of Origin:	CHINA
Appropriate Age Grade:	NOT REQUESTED	Country of Destination:	UK
Client Specified Age Grade:	4-12 YEARS	Assortment No.:	N/A
Tested Age Grade:	FROM 4 TO 12 YEARS OF AGE	Test Starting Date:	APRIL 08, 2014
UPC Code:	N/A	Test Finished Date:	APRIL 14, 2014

EXECUTIVE SUMMARY:

The sample(s) MEET the following requirement(s):

- The flammability requirements of the European Standard "Safety of Toys", EN 71: Part 2: 2011.
- The migration of certain elements in Category III - Scraped off toy material requirements of the European Standard, "Safety of Toys", EN 71 Part 3: 2013.

Note: At the request of the client, the sample(s) was evaluated for use by children 4-12 years.

Note: The received sample(s) contained accessible component(s) of less than 10 milligrams by weight on one single sample, therefore such component(s) was not subject to migration of certain elements of European Standard, "Safety of Toys", EN 71 Part 3: 2013, as specified in Clause 7.1 - Selection of test portions.

BUREAU VERITAS SHENZHEN CO.,LTD

BUREAU VERITAS SHENZHEN CO.,LTD

Choy Hon Kwong, Adams
Senior Manager
Analytical Department

Wendy Cha
Manager
Toys And Juvenile Products Department

AC/WC/zh

This report shall not be reproduced except in full, without the written approval of our laboratory.



RESULTS:

APPROPRIATE AGE GRADE DETERMINATION

The Appropriate Age Grade is determined with reference to the EN71 : Part 1 : 2011, CR 14379:2002 "Classification of toys-Guidelines" prepared by Technical Committee CEN TC 52 and Age Grade Determination Guidelines of the Consumer Product Safety Commission (CPSC).	
Note :	The most stringent age grade from the Labeled Age Grade and the Appropriate Age Grade will be used for testing.
Note :	If the client does not specify an age grade for testing or request Bureau Veritas Consumer Products Services, Inc. to determine an appropriate age grade, the labeled age grade will be used for testing.

EXPLANATION OF THE ABBREVIATIONS FOR PART 1, 2 & 6

Symbol	Explanation				
NM	The sample(s) DOES NOT MEET the requirement of this Subclause				
M	The sample(s) MEETS the requirement of this Subclause				
N/A	Not Applicable				
NR	Not Requested				
NE	Not Evaluated				
NT	Not Tested				
NP	None Present				
P	Present				
R	Refer to Comment Section of this report				
Symbol	Language Present	Symbol	Language Present	Symbol	Language Present
B	Belgian language	G	German language	PR	Portuguese language
D	Danish language	GR	Greek language	S	Spanish language
E	English language	H	Dutch language	SD	Swedish language
F	Finnish language	I	Italian language	SZ	Swiss language
FR	French language	N	Norwegian language		



RESULTS:

FLAMMABILITY (EN 71 PART 2: 2011)

Subclause	Requirement	Result
4.1	Cellulose nitrate	NP
4.1	Surface flash on a piled surface	NA
*4.1	Flammable gases	NA
*4.1	Extremely flammable liquids, highly flammable liquids, flammable liquids and flammable gels	NA
4.2	Toys to be worn on the head	NA
4.3	Toy disguise costumes and toys intended to be worn by child in play	NA
4.3	warning on product and packaging (10 - 30 mm/s)	NA
4.4	Toys intended to be entered by a child	NA
4.4	warning on product and packaging (10 – 30 mm/s)	NA
4.5	Soft-filled toys	M

REQUIREMENTS & TEST METHODS CROSS REFERENCE TABLE FOR PART 2

Sub-clause	Test Method	Sub-clause	Test Method	Sub-clause	Test Method	Sub-clause	Test Method
4.2.2	5.2	4.2.4	5.3	4.3	5.4	4.5	5.5
4.2.3	5.3	4.2.5	5.4	4.4	5.4	-	-

* Note: Subclause indicated with * are not accredited.



MAGMATIC LIMITED
 Technical Report: **(8514)098-0724**
 April 14, 2014
 Page 4 of 21

RESULTS:

MIGRATION OF CERTAIN ELEMENTS (European Standard EN 71 Part 3: 2013)

Test Method : European Standard EN 71 Part 3: 2013, Annex E.

Class: Category III - Scraped off toy material

Sample Identity	Color	Location	Style
A.	Green coating /white underlying	Words & pattern	
B.	White coating	Words & pattern	
C.	Orange coating/white underlying	Words & pattern	
D.	Light grey coating/white underlying	Words on belt & seat	
E.	Grey coating /white underlying	Pattern on backrest	
F.	Shiny grey coating	Rim of backrest & middle of belt	
G.	Green plastic	Handle	
H.	Orange plastic	Button & buckle of belt	
I.	Clear laminated multi-color printed white plastic sticker	Sticker	
J.	Translucent green plastic	Zipper teeth	
K.	White /blue soft plastic	Zipper hand	
L.	Black plastic	Joint of belt	
M.	Bright black plastic	Body of seat & inner backpack	
N.	Matt black plastic	Zipper teeth	
O.	Black hook & loop fastener	Velcro	
P.	Green fabric	Backrest & backpack	
Q.	Black fabric	Belt & handle	
R.	Black hook & loop fastener /black thread	Velcro	
S.	Matt black fabric /black PVC/ white embroidery	Body of seat & backpack Logo	
T.	Grey fabric /grey PVC	Body of seat & backpack	
U.	Matt green fabric /green thread	Zipper band	
V.	Bright black fabric /bright black thread	Inner backpack & rim of seat	



MAGMATIC LIMITED
Technical Report: **(8514)098-0724**
April 14, 2014
Page 5 of 21

RESULTS:

MIGRATION OF CERTAIN ELEMENTS (European Standard EN 71 Part 3: 2013)

Test Method : European Standard EN 71 Part 3: 2013, Annex E.

Class: Category III - Scraped off toy material

Sample Identity	Color	Location	Style
W.	Soft black fabric /soft black thread	Zipper band	
X.	Green net fabric /bright green thread	Backpack	
Y.	Black printed bright white fabric	Sewn label	
Z.	Black elastic band	Elastic band	
AA.	White /blue /red knitted fabric / Grey thread	Logo label Middle of belt	
AB.	Bright green net fabric	Belt & body of backpack	
AC.	Matt black elastic band	Elastic band of buckle	



MAGMATIC LIMITED
 Technical Report: **(8514)098-0724**
 April 14, 2014
 Page 10 of 21

RESULTS:

MIGRATION OF CERTAIN ELEMENTS (European Standard EN 71 Part 3: 2013)

Test Method : European Standard EN 71 Part 3: 2013, Annex E.
 Class: Category III - Scraped off toy material

Analyte	Requirement (mg/kg)	Result (mg/kg)					
		Sample ID					
		Y.	Z.	AA.	AB.	AC.	-
Aluminium (Al)	70000	5	LT 2	2	LT 2	5	-
Arsenic (As)	47	LT 2	LT 2	LT 2	LT 2	LT 2	-
Boron (B)	15000	LT 2	LT 2	LT 2	LT 2	LT 2	-
Barium (Ba)	18750	LT 2	6	LT 2	LT 2	50	-
Cadmium (Cd)	17	LT 2	LT 2	LT 2	LT 2	LT 2	-
Cobalt (Co)	130	LT 2	LT 2	LT 2	LT 2	LT 2	-
Chromium III (Cr III)	460	LT 0.15	LT 0.15	LT 0.15	LT 0.15	LT 0.15	-
Chromium VI (Cr VI)	0.2						
Copper (Cu)	7700	LT 2	LT 2	LT 2	LT 2	LT 2	-
Mercury (Hg)	94	LT 2	LT 2	LT 2	LT 2	LT 2	-
Manganese (Mn)	15000	LT 2	LT 2	LT 2	LT 2	LT 2	-
Nickel (Ni)	930	LT 2	LT 2	LT 2	LT 2	LT 2	-
Lead (Pb)	160	LT 2	LT 2	LT 2	LT 2	LT 2	-
Antimony (Sb)	560	LT 2	LT 2	LT 2	LT 2	LT 2	-
Selenium (Se)	460	LT 2	LT 2	LT 2	LT 2	LT 2	-
Tin (Sn)	180000	LT 2	LT 2	LT 2	LT 2	LT 2	-
Organic tin	12	LT 2	LT 2	LT 2	LT 2	LT 2	-
Strontium (Sr)	56000	LT 2	LT 2	LT 2	LT 2	LT 2	-
Zinc (Zn)	46000	24	61	LT 2	2	270	-
Mass of trace amount (gram)							-
Conclusion		Pass	Pass	Pass	Pass	Pass	-

mg/kg = milligrams per kilogram (ppm=parts per million) LT = Less Than
 * = Average of duplicate analysis FR = Failed Result
 Organic tin = migration of total organic tin is expressed as tributyl tin cation content in mg/kg
 # = Verified results (see note)

Remark:

- Results of Cr III and Cr VI were reported as sum of soluble Chromium content unless specified.
- Result(s) of organic tin was (were) calculated while assuming the tin content wholly contributed from tributyltin cation unless specified.

Note:

If soluble chromium content or soluble tin content exceeded the screening limits of soluble chromium (VI) or organic tin content, the results were verified by below method

- Chromium VI: In house Ion-chromatography analysis
- Organic tin: EN71 part 3:2013, Annex G by Gas Chromatography – Mass Spectroscopy analysis.

RESULTS:



RESULTS:

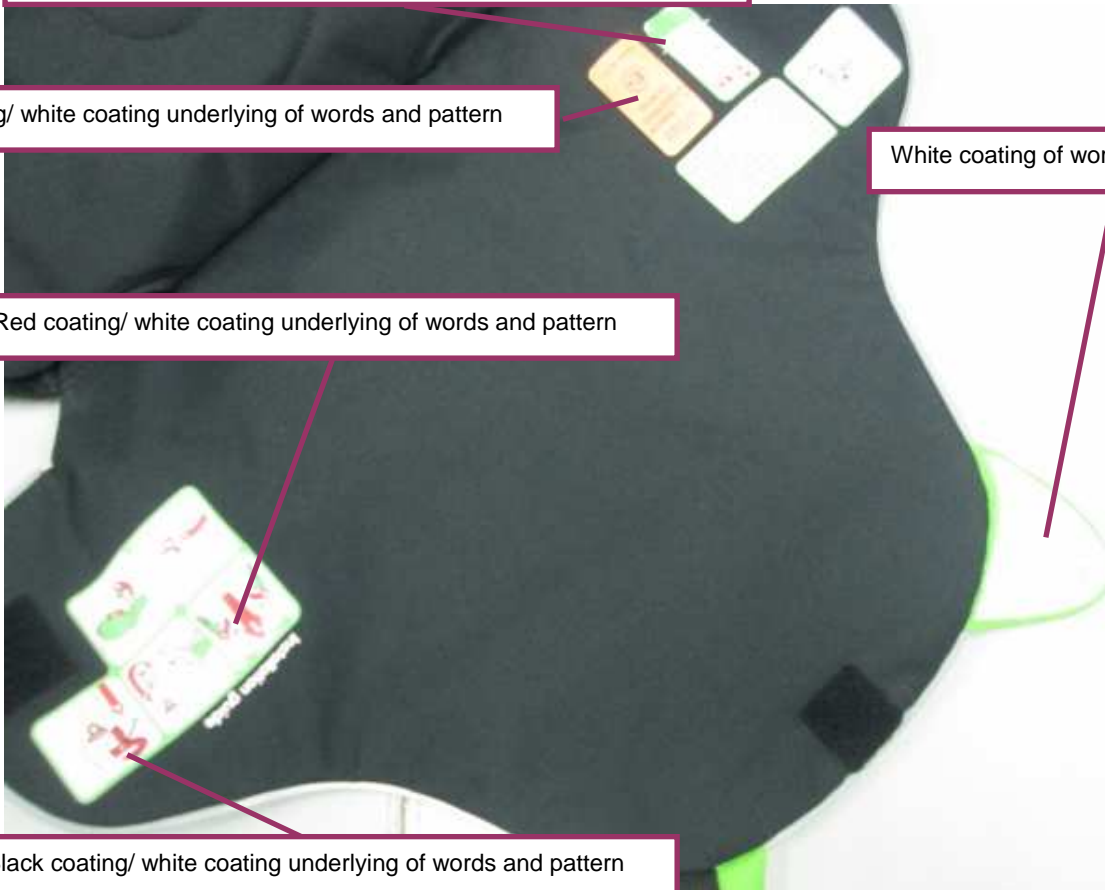
Green coating/ white coating underlying of words and pattern

Orange coating/ white coating underlying of words and pattern

White coating of words and pattern

Red coating/ white coating underlying of words and pattern

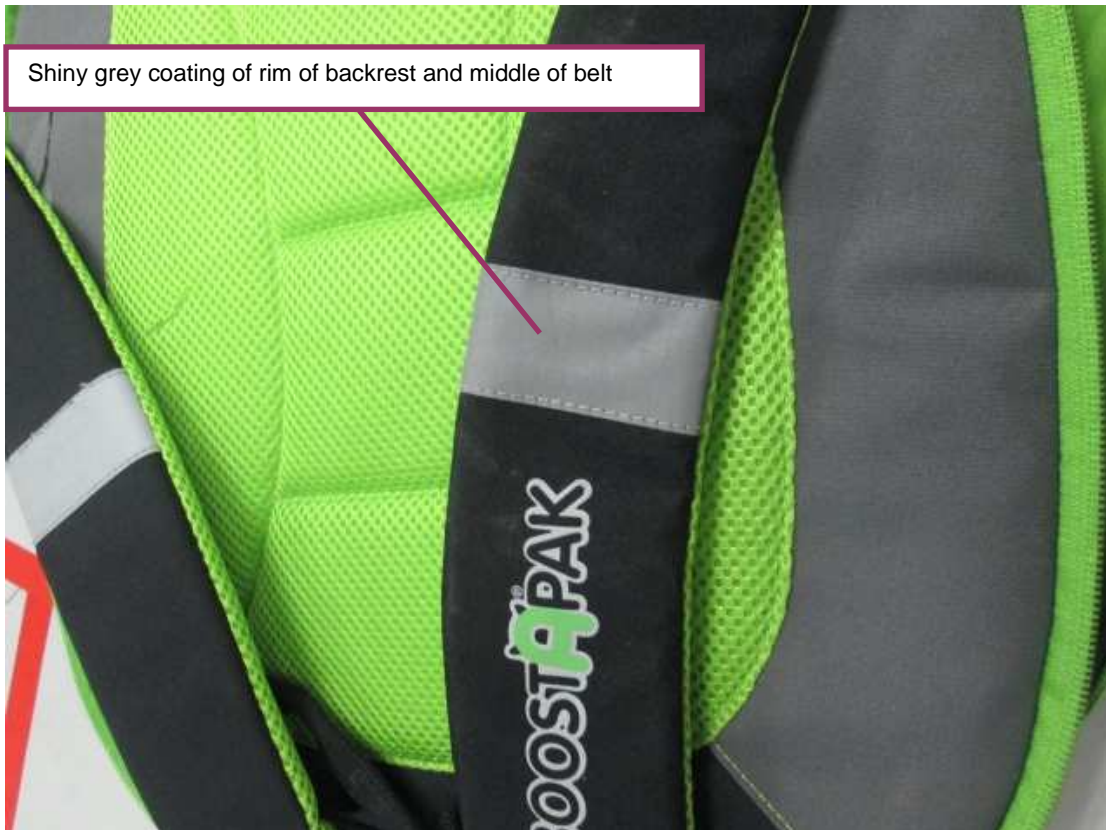
Black coating/ white coating underlying of words and pattern



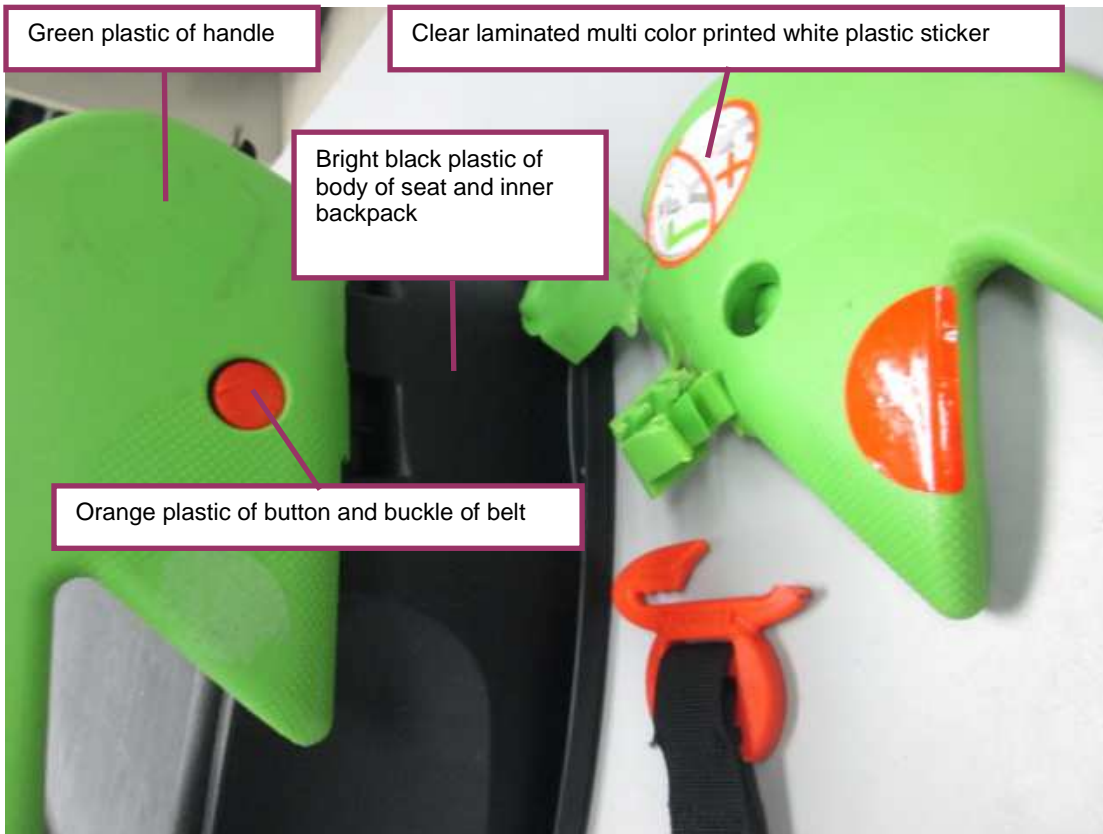
RESULTS:



RESULTS:



RESULTS:



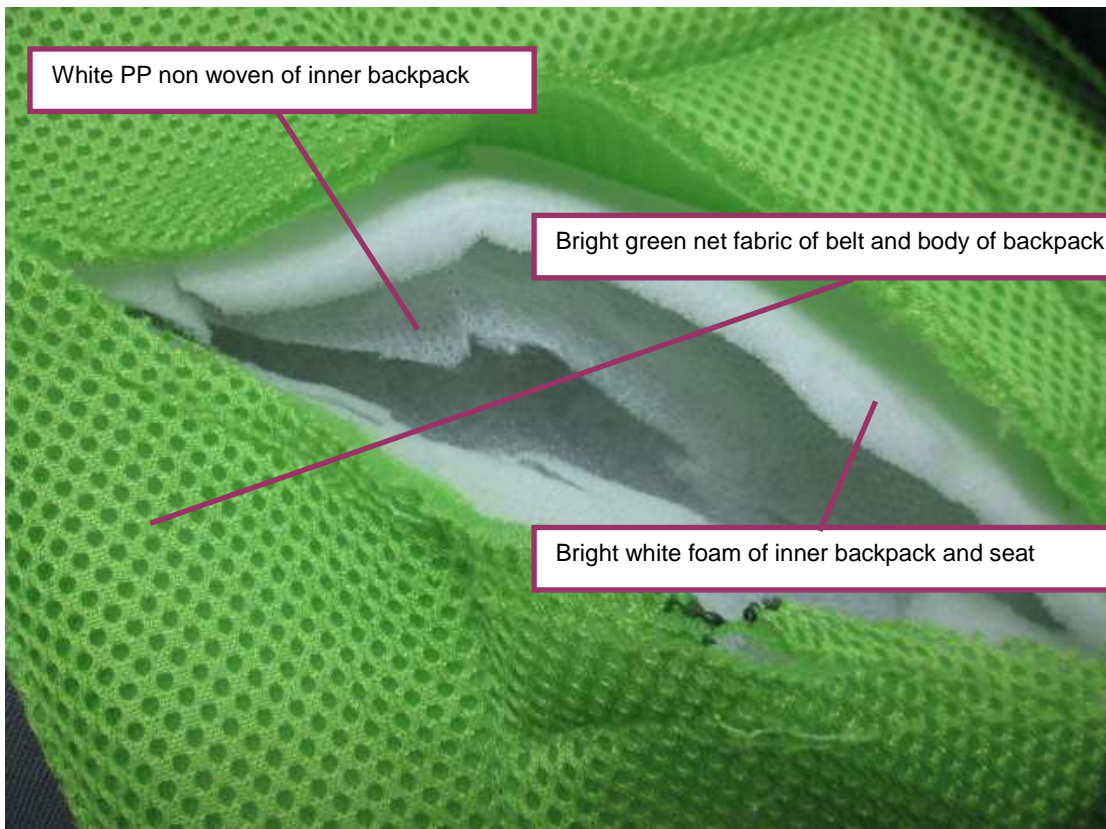
RESULTS:



RESULTS:



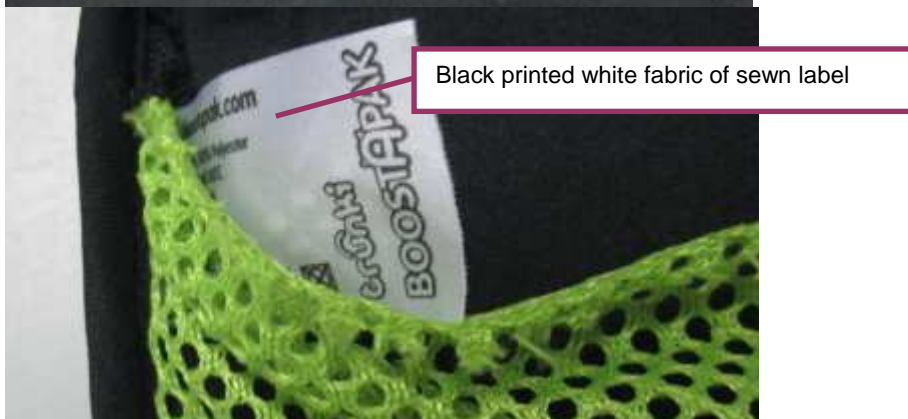
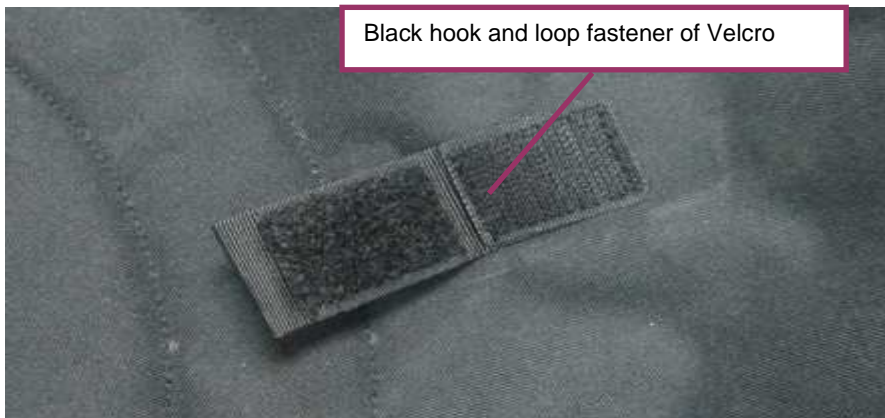
RESULTS:



RESULTS:



RESULTS:



RESULTS:



White/ blue/ red knitted fabric with grey thread of logo label and middle of belt

END OF REPORT